

the
KIPLING
auctions

10

Baghera/wines

legends

the 20th century in bottles

friday, 11th of april 2025
live-streamed online "kipling" auction direct from geneva
12 pm – noon (cest)

live-streamed online auction direct from Geneva

when

Friday, 11th of April 2025 | 12pm – noon (CEST)

where

Online: bagherawines.com

location

Lots are stored under bond at the Geneva Freeports.

viewing

All lots (including a detailed description and high resolution photographs) are accessible on our website and bidding platform: www.bagherawines.com.

Viewing by appointment only on Wednesday 26th of March 2025.

sale designation

When making enquiries, please refer to this sale as sale Kipling 10.

bidding

Online bids only.

For more information, please contact: office@bagherawines.com

Baghera/wines

Michael Ganne, Chief Executive Officer • mganne@bagherawines.com

Francesco Lee, Director Asia • flee@bagherawines.com

Pablo Alvarez Esteban, Director Geneva • palvarez@bagherawines.com

Olivia Bouët-Willaumez, Art Director • owillaumez@bagherawines.com

Ching-Hua Hsu, Accounting & Administrative Officer • chinghua@bagherawines.com

Camille Balboux, Wine Specialist • cbalboux@bagherawines.com

Virginie Maison, Auctioneer • vmaison@bagherawines.com

Gary Bovagne, Boutique Manager • gbovagne@bagherawines.com

Florian Luthi, Photography Manager • florian@bagherawines.com

Cedric Lefrançois, Cellar Manager • cedric@bagherawines.com

KS Wong, South-east Asia Curator • ks@bagherawines.com

Franck Bouvier, Administrative & Logistical Assistant • franck@bagherawines.com

Legends,

What defines a legendary wine? It is a perfect combination of an exceptional vintage and remarkable aging potential sourced from a prestigious Domaine or Château. Such a bottle transcends time, reputation and rarity to become an icon in the realm of fine wine.

Indeed, legendary wines do exist, but they require impeccable provenance: a bottle that has been meticulously stored in the same location for decades in an ideal cellar. While improperly stored wines or those that have traveled excessively may deteriorate, those well-preserved can maintain their vibrancy for over a century.

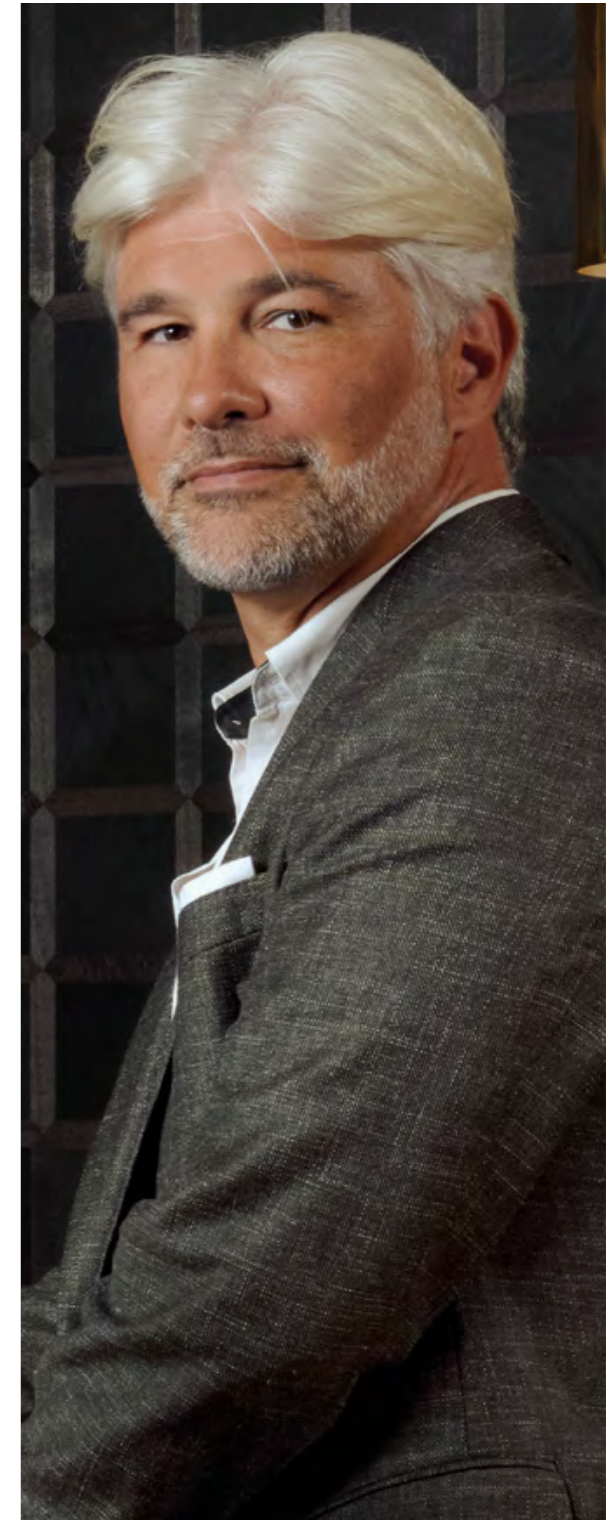
Our *Kipling 10* exemplifies this, as it is a single-owner cellar housing a remarkable selection of legendary wines with outstanding provenance and maintained with professional care. Only a visionary man could have amassed such a rare and expansive collection, commencing with the great vintage of 1865, kept for decades in a parisian cellar — these wines are undeniably extraordinary.

Enjoying a stunning 100-year-old wine is a rare, historical, and profound experience. I have been fortunate to feel this joy several times, most recently just days ago. You don't need to be an expert or a connoisseur to appreciate such a moment; the wine itself will elevate your senses to new heights of enjoyment...

Visit our website to behold the vibrant colors of these wines, and you will already sense the emotion. As a wine lover, opportunities to acquire such rare, lively bottles ready for sharing are few and far between.

Good luck with your bids, and I truly hope you get the chance to experience the taste of these exceptional wines soon.

Michael



the collection

19th century

— — lot 1 # Cave Ducs d'Albufera, Corton "Clos Du Roi" 1865	1 Bottle	chf	2'600 — 5'200
— — lot 2 # Cave Ducs d'Albufera, Corton "Clos Du Roi" 1865	1 Bottle	chf	2'000 — 4'000
— — lot 3 # Arbellot, Fine de Champagne 1865	2 Bottles	chf	3'500 — 7'000
— — lot 4 # Arbellot, Fine de Champagne 1875	2 Bottles	chf	3'400 — 6'800
— — lot 5 # Madere Cave P. Essling 1883	6 Bottles	chf	3'000 — 6'000
— — lot 6 # Cave Ducs d'Albufera, Corton 1884	1 Bottle	chf	1'500 — 3'000
— — lot 7 # Cave Ducs d'Albufera, Corton 1884	1 Bottle	chf	1'000 — 2'000
— — lot 8 # Cave Ducs d'Albufera, Musigny 1885	1 Bottle	chf	1'800 — 3'600

1900 — 1910's

— — lot 9 # Arbellot, Fine de Champagne 1906	2 Bottles	chf	1'000 — 2'000
— — lot 10 # Château Haut-Brion 1911	3 Bottles	chf	4'200 — 8'400
— — lot 11 # Château Ausone 1912	1 Bottle	chf	600 — 1'200
— — lot 12 # Cognac Delamain 1914	2 Bottles	chf	1'000 — 2'000
— — lot 13 # Arbellot, Fine de Champagne 1914	3 Bottles	chf	1'500 — 3'000
— — lot 14 # Prosper Maufoux, Bonnes-Mares 1915	4 Bottles	chf	950 — 1'900
— — lot 15 # Prosper Maufoux, Bonnes-Mares 1915	4 Bottles	chf	800 — 1'600
— — lot 16 # Prosper Maufoux, Corton 1915	3 Bottles	chf	900 — 1'800
— — lot 17 # Prosper Maufoux, Corton 1915	3 Bottles	chf	900 — 1'800
— — lot 18 # Prosper Maufoux, Corton 1915	3 Bottles	chf	800 — 1'600
— — lot 19 # Prosper Maufoux, Corton 1915	3 Bottles	chf	800 — 1'600
— — lot 20 # Prosper Maufoux, Corton 1915	3 Bottles	chf	700 — 1'400
— — lot 21 # Prosper Maufoux, Corton 1915	4 Bottles	chf	900 — 1'800
— — lot 22 # Château Lafite Rothschild Believed 1916	1 Magnum	chf	2'600 — 5'200
— — lot 23 # Château Mouton Rothschild 1916	6 Bottles	chf	11'000 — 22'000
— — lot 24 # Château Mouton Rothschild 1916	6 Bottles	chf	11'000 — 22'000
— — lot 25 # Marey & Liger-Belair, La Romanée 1919	1 Bottle	chf	3'000 — 6'000
— — lot 26 # Marey & Liger-Belair, La Romanée 1919	1 Bottle	chf	3'000 — 6'000
— — lot 27 # Marey & Liger-Belair, La Romanée 1919	1 Bottle	chf	2'800 — 5'600
— — lot 28 # Marey & Liger-Belair, La Romanée 1919	1 Bottle	chf	2'800 — 5'600
— — lot 29 # Marey & Liger-Belair, La Romanée 1919	1 Bottle	chf	2'800 — 5'600
— — lot 30 # Marey & Liger-Belair, La Romanée 1919	1 Bottle	chf	2'400 — 4'800
— — lot 31 # Marey & Liger-Belair, La Romanée 1919	1 Bottle	chf	2'400 — 4'800
— — lot 32 # Marey & Liger-Belair, La Romanée 1919	2 Bottles	chf	2'000 — 4'000
— — lot 33 # Marey & Liger-Belair, La Romanée 1919	3 Bottles	chf	3'000 — 6'000
— — lot 34 # Marey & Liger-Belair, La Romanée 1919	3 Bottles	chf	1'500 — 3'000
— — lot 35 # Marey & Liger-Belair, Richebourg 1919	1 Bottle	chf	3'000 — 6'000
— — lot 36 # Marey & Liger-Belair, Richebourg 1919	1 Bottle	chf	2'800 — 5'600

— — lot 37 # Marey & Liger-Belair, Richebourg 1919	1 Bottle	chf	2'400 — 4'800
— — lot 38 # Marey & Liger-Belair, Richebourg 1919	1 Bottle	chf	2'000 — 4'000
— — lot 39 # Prosper Maufoux, Pommard 1919	3 Bottles	chf	600 — 1'200
— — lot 40 # Prosper Maufoux, Pommard 1919	3 Bottles	chf	600 — 1'200
— — lot 41 # Prosper Maufoux, Pommard 1919	3 Bottles	chf	460 — 920
— — lot 42 # Prosper Maufoux, Pommard 1919	6 Bottles	chf	1'100 — 2'200
— — lot 43 # Prosper Maufoux, Pommard 1919	6 Bottles	chf	1'000 — 2'000
— — lot 44 # Prosper Maufoux, Pommard 1919	6 Bottles	chf	900 — 1'800

1920's

— — lot 45 # Prosper Maufoux, Grands-Echézeaux 1923	1 Bottle	chf	500 — 1'000
— — lot 46 # Prosper Maufoux, Grands-Echézeaux 1923	3 Bottles	chf	1'300 — 2'600
— — lot 47 # Prosper Maufoux, Grands-Echézeaux 1923	4 Bottles	chf	1'200 — 2'400
— — lot 48 # Prosper Maufoux, Charmes-Chambertin 1923	3 Bottles	chf	900 — 1'800
— — lot 49 # Prosper Maufoux, Charmes-Chambertin 1923	3 Bottles	chf	900 — 1'800
— — lot 50 # Prosper Maufoux, Charmes-Chambertin 1923	3 Bottles	chf	900 — 1'800
— — lot 51 # Prosper Maufoux, Charmes-Chambertin 1923	3 Bottles	chf	800 — 1'600
— — lot 52 # Prosper Maufoux, Charmes-Chambertin 1923	6 Bottles	chf	1'500 — 3'000
— — lot 53 # Prosper Maufoux, Charmes-Chambertin 1923	6 Bottles	chf	1'300 — 2'600
— — lot 54 # Château d'Yquem 1924	6 Bottles	chf	7'500 — 15'000
— — lot 55 # Château d'Yquem 1924	3 Magnums	chf	10'000 — 20'000
— — lot 56 # Moingeon-Ropiteaux, Charmes-Chambertin 1926	2 Bottles	chf	320 — 640
— — lot 57 # Moingeon-Ropiteaux, Charmes-Chambertin 1926	3 Bottles	chf	500 — 1'000
— — lot 58 # Moingeon-Ropiteaux, Charmes-Chambertin 1926	3 Bottles	chf	440 — 880
— — lot 59 # Moingeon-Ropiteaux, Charmes-Chambertin 1926	4 Bottles	chf	550 — 1'100
— — lot 60 # Charles Noëllat, Romanée-Saint-Vivant 1926	1 Bottle	chf	200 — 400
— — lot 61 # Prosper Maufoux, Corton 1926	2 Bottles	chf	300 — 600
— — lot 62 # Château Haut-Brion 1926	1 Bottle	chf	1'200 — 2'400
— — lot 63 # Château Haut-Brion 1926	1 Bottle	chf	1'200 — 2'400
— — lot 64 # Château Haut-Brion 1926	1 Bottle	chf	1'200 — 2'400
— — lot 65 # Château Haut-Brion 1926	1 Bottle	chf	1'200 — 2'400
— — lot 66 # Château Haut-Brion 1926	1 Bottle	chf	1'200 — 2'400
— — lot 67 # Château Haut-Brion 1926	1 Bottle	chf	1'200 — 2'400
— — lot 68 # Château Haut-Brion 1926	1 Bottle	chf	1'200 — 2'400
— — lot 69 # Château Haut-Brion 1926	1 Bottle	chf	1'200 — 2'400
— — lot 70 # Château Haut-Brion 1926	1 Bottle	chf	1'200 — 2'400
— — lot 71 # Château Haut-Brion 1926	1 Bottle	chf	1'200 — 2'400
— — lot 72 # Château Haut-Brion 1926	1 Bottle	chf	1'200 — 2'400
— — lot 73 # Château Haut-Brion 1926	1 Bottle	chf	1'200 — 2'400
— — lot 74 # Château Haut-Brion 1926	3 Bottles	chf	3'500 — 7'000
— — lot 75 # Château Haut-Brion 1926	3 Bottles	chf	3'500 — 7'000

— — lot 76 # Château Haut-Brion 1926	3 Bottles	chf	3'500 — 7'000	— — lot 115 # Bouchard Aîné & Fils, Chambolle-Musigny 1934	3 Bottles	chf	400 — 800
— — lot 77 # Château Haut-Brion 1926	3 Bottles	chf	3'500 — 7'000	— — lot 116 # Bouchard Aîné & Fils, Chambolle-Musigny 1934	3 Bottles	chf	400 — 800
— — lot 78 # Château Haut-Brion 1926	3 Bottles	chf	3'500 — 7'000	— — lot 117 # Bouchard Aîné & Fils, Chambolle-Musigny 1934	6 Bottles	chf	750 — 1'500
— — lot 79 # Château Haut-Brion 1926	3 Bottles	chf	3'500 — 7'000	— — lot 118 # Bouchard Aîné & Fils, Chambolle-Musigny 1934	6 Bottles	chf	700 — 1'400
— — lot 80 # Château Haut-Brion 1926	3 Bottles	chf	3'500 — 7'000	— — lot 119 # Bouchard Aîné & Fils, Chambolle-Musigny 1934	6 Bottles	chf	650 — 1'300
— — lot 81 # Château Haut-Brion 1926	6 Bottles	chf	7'000 — 14'000	— — lot 120 # Château de la Tour, Clos Vougeot 1934	1 Half-bottle	chf	80 — 160
— — lot 82 # Château Haut-Brion 1926	6 Bottles	chf	7'000 — 14'000	— — lot 121 # Château de la Tour, Clos Vougeot 1934	2 Bottles	chf	300 — 600
— — lot 83 # Château Haut-Brion 1926	6 Bottles	chf	7'000 — 14'000	— — lot 122 # Château de la Tour, Clos Vougeot 1934	2 Bottles	chf	260 — 520
— — lot 84 # Château Haut-Brion 1926	6 Bottles	chf	7'000 — 14'000	— — lot 123 # Pasquier Desvignes, Clos Vougeot 1934	3 Bottles	chf	360 — 720
— — lot 85 # Château Mouton Rothschild 1928	6 Bottles	chf	9'000 — 18'000	— — lot 124 # Pasquier Desvignes, Clos Vougeot 1934	3 Bottles	chf	360 — 720
— — lot 86 # Château Mouton Rothschild 1928	6 Bottles	chf	9'000 — 18'000	— — lot 125 # Pasquier Desvignes, Clos Vougeot 1934	6 Bottles	chf	650 — 1'300
— — lot 87 # Lupé Cholet, Musigny 1929	1 Bottle	chf	600 — 1'200	— — lot 126 # Pasquier Desvignes, Clos Vougeot 1934	6 Bottles	chf	650 — 1'300
— — lot 88 # Lupé Cholet, Musigny 1929	1 Bottle	chf	550 — 1'100	— — lot 127 # Joseph Drouhin, Richebourg 1934	2 Bottles	chf	900 — 1'800
— — lot 89 # Lupé Cholet, Musigny 1929	3 Bottles	chf	1'500 — 3'000	— — lot 128 # Château Latour 1934	3 Bottles	chf	2'400 — 4'800
— — lot 90 # Maison Louis Latour, Chambertin 1929	3 Bottles	chf	1'000 — 2'000	— — lot 129 # Château Latour 1934	2 Bottles	chf	1'600 — 3'200
— — lot 91 # Maison Louis Latour, Chambertin 1929	3 Bottles	chf	900 — 1'800	— — lot 130 # Château Latour 1934	2 Bottles	chf	1'400 — 2'800
— — lot 92 # Maison Louis Latour, Chambertin 1929	3 Bottles	chf	800 — 1'600	— — lot 131 # Château Margaux 1934	3 Bottles	chf	1'800 — 3'600
— — lot 93 # Prosper Maufoux, Charmes-Chambertin 1929	3 Bottles	chf	800 — 1'600	— — lot 132 # Château Margaux 1934	3 Bottles	chf	1'800 — 3'600
— — lot 94 # Prosper Maufoux, Charmes-Chambertin 1929	3 Bottles	chf	700 — 1'400	— — lot 133 # Château Margaux 1934	6 Bottles	chf	3'500 — 7'000
— — lot 95 # Prosper Maufoux, Charmes-Chambertin 1929	3 Bottles	chf	650 — 1'300	— — lot 134 # Château Margaux 1934	6 Bottles	chf	3'000 — 6'000
— — lot 96 # Prosper Maufoux, Charmes-Chambertin 1929	3 Bottles	chf	500 — 1'000	— — lot 135 # Château d'Yquem 1934	6 Bottles	chf	6'000 — 12'000
— — lot 97 # Charles Noëllat, Romanée-Saint-Vivant 1929	1 Bottle	chf	200 — 400	— — lot 136 # Morin, Vosne-Romanée " <i>Beaumonts</i> " 1937	2 Bottles	chf	200 — 400
— — lot 98 # Prosper Maufoux, Vosne-Romanée 1929	2 Bottles	chf	300 — 600	— — lot 137 # Château Lafite Rothschild 1937	3 Bottles	chf	3'200 — 6'400
— — lot 99 # Bouchard Aîné & Fils, Beaune 1929	3 Bottles	chf	400 — 800	— — lot 138 # Château Lafite Rothschild 1937	3 Bottles	chf	2'800 — 5'600
— — lot 100 # Bouchard Aîné & Fils, Beaune 1929	2 Bottles	chf	260 — 520	— — lot 139 # Château Lafite Rothschild 1937	1 Magnum	chf	2'200 — 4'400
— — lot 101 # Joseph Drouhin, Beaune 1929	3 Bottles	chf	500 — 1'000	— — lot 140 # Château Latour 1937	6 Bottles	chf	3'200 — 6'400
— — lot 102 # Joseph Drouhin, Beaune 1929	3 Bottles	chf	500 — 1'000	— — lot 141 # Château Latour 1937	6 Bottles	chf	3'000 — 6'000
— — lot 103 # Joseph Drouhin, Beaune 1929	3 Bottles	chf	480 — 960	— — lot 142 # Château Latour 1937	6 Bottles	chf	3'000 — 6'000
— — lot 104 # Bouchard Aîné & Fils, Pommard " <i>Rugiens</i> " 1929	1 Bottle	chf	240 — 480	— — lot 143 # Château Latour 1937	1 Bottle	chf	400 — 800
— — lot 105 # Bouchard Aîné & Fils, Pommard " <i>Rugiens</i> " 1929	2 Bottles	chf	480 — 960	— — lot 144 # Château Margaux 1937	6 Bottles	chf	3'000 — 6'000
— — lot 106 # Moingeon-Ropiteaux, Pommard 1929	3 Bottles	chf	400 — 800	— — lot 145 # Château Margaux 1937	6 Bottles	chf	2'800 — 5'600
— — lot 107 # Moingeon-Ropiteaux, Pommard 1929	3 Bottles	chf	380 — 760	— — lot 146 # Château Haut-Brion 1937	6 Bottles	chf	6'000 — 12'000
— — lot 108 # Moingeon-Ropiteaux, Pommard 1929	3 Bottles	chf	380 — 760	— — lot 147 # Château Haut-Brion 1937	6 Bottles	chf	6'000 — 12'000
— — lot 109 # Moingeon-Ropiteaux, Pommard 1929	3 Bottles	chf	360 — 720	— — lot 148 # Château Haut-Brion 1937	6 Bottles	chf	6'000 — 12'000
				— — lot 149 # Château Haut-Brion 1937	6 Bottles	chf	6'000 — 12'000
				— — lot 150 # Château Haut-Brion 1937	6 Bottles	chf	6'000 — 12'000
1930's				— — lot 151 # Château Haut-Brion 1937	6 Bottles	chf	6'000 — 12'000
— — lot 110 # Joseph Drouhin, Beaune " <i>Avaux</i> " 1934	3 Bottles	chf	300 — 600	— — lot 152 # Château Haut-Brion 1937	6 Bottles	chf	6'000 — 12'000
— — lot 111 # Joseph Drouhin, Musigny 1934	3 Bottles	chf	3'000 — 6'000	— — lot 153 # Château Haut-Brion 1937	3 Bottles	chf	3'000 — 6'000
— — lot 112 # Joseph Drouhin, Musigny 1934	3 Bottles	chf	2'800 — 5'600	— — lot 154 # Château Haut-Brion 1937	3 Bottles	chf	3'000 — 6'000
— — lot 113 # Joseph Drouhin, Musigny 1934	3 Bottles	chf	2'600 — 5'200	— — lot 155 # Château Haut-Brion 1937	3 Bottles	chf	3'000 — 6'000
— — lot 114 # Joseph Drouhin, Musigny 1934	2 Bottles	chf	2'400 — 4'800				

— — lot 156 # Château Haut-Brion 1937	1 Bottle	chf	1'000 — 2'000
— — lot 157 # Château Ausone 1937	3 Bottles	chf	1'200 — 2'400
— — lot 158 # Château Ausone 1937	3 Bottles	chf	1'200 — 2'400
— — lot 159 # Château Ausone 1937	3 Bottles	chf	1'200 — 2'400
— — lot 160 # Château Ausone 1937	3 Bottles	chf	1'200 — 2'400
— — lot 161 # Château Ausone 1937	6 Bottles	chf	2'200 — 4'400
— — lot 162 # Château Ausone 1937	6 Bottles	chf	2'200 — 4'400
— — lot 163 # Château Ausone 1937	6 Bottles	chf	1'800 — 3'600
— — lot 164 # Château Ausone 1937	6 Bottles	chf	1'800 — 3'600

1940's

— — lot 165 # Morin, Bonnes-Mares 1943	6 Bottles	chf	800 — 1'600
— — lot 166 # Morin, Bonnes-Mares 1943	6 Bottles	chf	700 — 1'400
— — lot 167 # Morin, Nuits-Saint-Georges “ <i>Pruliers</i> ” 1943	6 Bottles	chf	460 — 920
— — lot 168 # Morin, Nuits-Saint-Georges “ <i>Pruliers</i> ” 1943	6 Bottles	chf	440 — 880
— — lot 169 # Château Haut-Brion 1943	6 Bottles	chf	4'000 — 8'000
— — lot 170 # Château Haut-Brion 1943	6 Bottles	chf	4'000 — 8'000
— — lot 171 # Charles Noëllat, Romanée-Saint-Vivant 1945	1 Bottle	chf	600 — 1'200
— — lot 172 # Charles Noëllat, Romanée-Saint-Vivant 1945	3 Bottles	chf	1'600 — 3'200
— — lot 173 # Charles Noëllat, Romanée-Saint-Vivant 1945	3 Bottles	chf	1'600 — 3'200
— — lot 174 # Charles Noëllat, Romanée-Saint-Vivant 1945	3 Bottles	chf	1'500 — 3'000
— — lot 175 # Charles Noëllat, Romanée-Saint-Vivant 1945	2 Bottles	chf	800 — 1'600
— — lot 176 # Bouchard Aîné & Fils, Corton 1945	3 Bottles	chf	1'300 — 2'600
— — lot 177 # Bouchard Aîné & Fils, Corton 1945	3 Bottles	chf	1'300 — 2'600
— — lot 178 # Bouchard Aîné & Fils, Corton 1945	5 Bottles	chf	2'000 — 4'000
— — lot 179 # Chanson, Richebourg 1947	3 Bottles	chf	1'100 — 2'200
— — lot 180 # Chanson, Richebourg 1947	3 Bottles	chf	1'000 — 2'000
— — lot 181 # Château Lafite Rothschild 1947	1 Magnum	chf	2'600 — 5'200
— — lot 182 # Bouchard Aîné & Fils, Charmes-Chambertin 1949	3 Bottles	chf	600 — 1'200
— — lot 183 # Bouchard Aîné & Fils, Charmes-Chambertin 1949	3 Bottles	chf	600 — 1'200
— — lot 184 # Bouchard Aîné & Fils, Charmes-Chambertin 1949	6 Bottles	chf	1'200 — 2'400
— — lot 185 # Joseph Drouhin, Pommard “ <i>Premier Cru</i> ” 1949	2 Bottles	chf	300 — 600

1950's

— — lot 186 # Remoissenet, Beaune “ <i>Les Marconnets</i> ” 1953	3 Bottles	chf	360 — 720
— — lot 187 # Remoissenet, Beaune “ <i>Les Marconnets</i> ” 1953	3 Bottles	chf	360 — 720
— — lot 188 # Remoissenet, Beaune “ <i>Les Marconnets</i> ” 1953	3 Bottles	chf	360 — 720
— — lot 189 # Remoissenet, Beaune “ <i>Les Marconnets</i> ” 1953	3 Bottles	chf	360 — 720
— — lot 190 # Remoissenet, Beaune “ <i>Les Marconnets</i> ” 1953	6 Bottles	chf	700 — 1'400
— — lot 191 # Remoissenet, Beaune “ <i>Les Marconnets</i> ” 1953	6 Bottles	chf	650 — 1'300
— — lot 192 # Remoissenet, Beaune “ <i>Les Marconnets</i> ” 1953	6 Bottles	chf	650 — 1'300

— — lot 193 # Remoissenet, Beaune “ <i>Les Marconnets</i> ” 1953	6 Bottles	chf	650 — 1'300
— — lot 194 # Remoissenet, Beaune “ <i>Les Marconnets</i> ” 1953	6 Bottles	chf	650 — 1'300
— — lot 195 # Remoissenet, Beaune “ <i>Les Marconnets</i> ” 1953	6 Bottles	chf	650 — 1'300
— — lot 196 # Château Lafite Rothschild 1953	1 Magnum	chf	2'600 — 5'200
— — lot 197 # Bouchard Aîné & Fils, Bonnes-Mares 1955	4 Half-bottles	chf	400 — 800
— — lot 198 # Bouchard Aîné & Fils, Bonnes-Mares 1955	4 Half-bottles	chf	400 — 800
— — lot 199 # Bouchard Aîné & Fils, Romanée-Saint-Vivant 1955	2 Magnums	chf	1'800 — 3'600
— — lot 200 # Bouchard Aîné & Fils, Romanée-Saint-Vivant 1955	3 Magnums	chf	2'600 — 5'200
— — lot 201 # Bouchard Aîné & Fils, Romanée-Saint-Vivant 1955	3 Magnums	chf	2'400 — 4'800
— — lot 202 # Château Mouton Rothschild 1955	6 Bottles	chf	6'000 — 12'000
— — lot 203 # Château Mouton Rothschild 1955	6 Bottles	chf	6'000 — 12'000
— — lot 204 # Château Mouton Rothschild 1955	6 Bottles	chf	6'000 — 12'000
— — lot 205 # Château Mouton Rothschild 1955	6 Bottles	chf	6'000 — 12'000
— — lot 206 # Château La Mission Haut-Brion 1955	6 Bottles	chf	5'000 — 10'000
— — lot 207 # Château La Mission Haut-Brion 1955	6 Bottles	chf	5'000 — 10'000
— — lot 208 # Château Mouton Rothschild 1959	6 Bottles	chf	10'000 — 20'000
— — lot 209 # Château Mouton Rothschild 1959	6 Bottles	chf	10'000 — 20'000
— — lot 210 # Château Mouton Rothschild 1959	1 Magnum	chf	4'000 — 8'000
— — lot 211 # Château Mouton Rothschild 1959	3 Magnums	chf	11'000 — 22'000

1960's

— — lot 212 # Morin, Nuits-Saint-Georges “ <i>Pruliers</i> ” 1961	3 Bottles	chf	240 — 480
— — lot 213 # Morin, Nuits-Saint-Georges “ <i>Pruliers</i> ” 1961	3 Bottles	chf	240 — 480
— — lot 214 # Morin, Nuits-Saint-Georges “ <i>Pruliers</i> ” 1961	6 Bottles	chf	480 — 960
— — lot 215 # Morin, Nuits-Saint-Georges “ <i>Pruliers</i> ” 1961	6 Bottles	chf	480 — 960
— — lot 216 # Morin, Nuits-Saint-Georges “ <i>Pruliers</i> ” 1961	6 Bottles	chf	480 — 960
— — lot 217 # Morin, Nuits-Saint-Georges “ <i>Pruliers</i> ” 1961	6 Bottles	chf	480 — 960
— — lot 218 # Morin, Nuits-Saint-Georges “ <i>Pruliers</i> ” 1961	6 Bottles	chf	480 — 960
— — lot 219 # Morin, Nuits-Saint-Georges “ <i>Cailles</i> ” 1961	6 Bottles	chf	440 — 880
— — lot 220 # Morin, Nuits-Saint-Georges “ <i>Cailles</i> ” 1961	6 Bottles	chf	380 — 760
— — lot 221 # Chandon de Briailles, Corton “ <i>Bressandes</i> ” 1961	5 Bottles	chf	650 — 1'300
— — lot 222 # Chandon de Briailles, Corton “ <i>Bressandes</i> ” 1961	3 Bottles	chf	320 — 640
— — lot 223 # Chandon de Briailles, Corton “ <i>Bressandes</i> ” 1961	3 Bottles	chf	300 — 600
— — lot 224 # Joseph Drouhin, Beaune “ <i>Premier Cru</i> ” 1961	6 Bottles	chf	700 — 1'400
— — lot 225 # Joseph Drouhin, Beaune “ <i>Premier Cru</i> ” 1961	6 Bottles	chf	650 — 1'300
— — lot 226 # Joseph Drouhin, Beaune “ <i>Premier Cru</i> ” 1961	6 Bottles	chf	650 — 1'300
— — lot 227 # Joseph Drouhin, Beaune “ <i>Premier Cru</i> ” 1961	6 Bottles	chf	600 — 1'200
— — lot 228 # Bouchard Père & Fils, Beaune “ <i>Les Marconnets</i> ” 1961	6 Bottles	chf	600 — 1'200
— — lot 229 # Bouchard Père & Fils, Beaune “ <i>Les Marconnets</i> ” 1961	6 Bottles	chf	600 — 1'200
— — lot 230 # Bouchard Père & Fils, Beaune “ <i>Les Marconnets</i> ” 1961	6 Bottles	chf	600 — 1'200
— — lot 231 # Bouchard Père & Fils, Beaune “ <i>Les Marconnets</i> ” 1961	6 Bottles	chf	550 — 1'100

— — lot 232 # Bouchard Père & Fils, Beaune “ <i>Les Marconnets</i> ” 1961	6 Bottles	chf	550 — 1’100
— — lot 233 # Bouchard Père & Fils, Beaune “ <i>Les Marconnets</i> ” 1961	3 Bottles	chf	280 — 560
— — lot 234 # Bouchard Père & Fils, Beaune “ <i>Les Marconnets</i> ” 1961	3 Bottles	chf	280 — 560
— — lot 235 # Bouchard Père & Fils, Beaune “ <i>Les Marconnets</i> ” 1961	3 Bottles	chf	280 — 560
— — lot 236 # Bouchard Père & Fils, Beaune “ <i>Les Marconnets</i> ” 1961	3 Bottles	chf	280 — 560
— — lot 237 # Château Mouton Rothschild 1961	6 Bottles	chf	10’000 — 20’000
— — lot 238 # Château Mouton Rothschild 1961	6 Bottles	chf	10’000 — 20’000
— — lot 239 # Château Mouton Rothschild 1961	6 Bottles	chf	10’000 — 20’000
— — lot 240 # Château Mouton Rothschild 1961	6 Bottles	chf	10’000 — 20’000
— — lot 241 # Château La Mission Haut-Brion 1961	6 Bottles	chf	9’000 — 18’000
— — lot 242 # Château Lafite Rothschild 1962	1 Magnum	chf	900 — 1’800
— — lot 243 # Château Mouton Rothschild 1962	6 Bottles	chf	3’200 — 6’400
— — lot 244 # Château Mouton Rothschild 1962	6 Bottles	chf	3’200 — 6’400
— — lot 245 # Château Mouton Rothschild 1962	6 Bottles	chf	3’200 — 6’400
— — lot 246 # Château Mouton Rothschild 1962	6 Bottles	chf	3’200 — 6’400
— — lot 247 # Maison Louis Latour, Charmes-Chambertin 1964	3 Bottles	chf	750 — 1’500
— — lot 248 # Maison Louis Latour, Charmes-Chambertin 1964	3 Bottles	chf	700 — 1’400
— — lot 249 # Maison Louis Latour, Charmes-Chambertin 1964	6 Bottles	chf	1’400 — 2’800
— — lot 250 # Maison Louis Latour, Charmes-Chambertin 1964	6 Bottles	chf	1’300 — 2’600
— — lot 251 # Maison Louis Latour, Charmes-Chambertin 1964	6 Bottles	chf	1’300 — 2’600
— — lot 252 # Jaboulet-Vercherre – Hospices de Beaune, Pommard “ <i>Cuvée Dames de la Charité</i> ” 1964	6 Bottles	chf	460 — 920
— — lot 253 # Jaboulet-Vercherre – Hospices de Beaune, Pommard “ <i>Cuvée Dames de la Charité</i> ” 1964	6 Bottles	chf	460 — 920
— — lot 254 # Jaboulet-Vercherre – Hospices de Beaune, Pommard “ <i>Cuvée Dames de la Charité</i> ” 1964	6 Bottles	chf	460 — 920
— — lot 255 # Jaboulet-Vercherre – Hospices de Beaune, Pommard “ <i>Cuvée Dames de la Charité</i> ” 1964	6 Bottles	chf	460 — 920
— — lot 256 # Joseph Drouhin – Hospices de Beaune, Volnay “ <i>Cuvée Général Muteau</i> ” 1964	6 Bottles	chf	480 — 960
— — lot 257 # Joseph Drouhin – Hospices de Beaune, Volnay “ <i>Cuvée Général Muteau</i> ” 1964	6 Bottles	chf	480 — 960
— — lot 258 # Joseph Drouhin – Hospices de Beaune, Volnay “ <i>Cuvée Général Muteau</i> ” 1964	6 Bottles	chf	440 — 880
— — lot 259 # Château Lafite Rothschild 1964	1 Magnum	chf	800 — 1’600
— — lot 260 # Château Lafite Rothschild 1964	5 Magnums	chf	3’800 — 7’600
— — lot 261 # Joseph Drouhin – Hospices de Beaune, Beaune “ <i>Cuvée Maurice Drouhin</i> ” 1966	5 Bottles	chf	400 — 800
— — lot 262 # Maison Louis Latour, Corton Grancey 1969	6 Bottles	chf	800 — 1’600
— — lot 263 # Maison Louis Latour, Corton Grancey 1969	6 Bottles	chf	800 — 1’600
— — lot 264 # Maison Louis Latour, Corton Grancey 1969	6 Bottles	chf	800 — 1’600

— — lot 265 # Maison Louis Latour, Corton Grancey 1969	6 Bottles	chf	800 — 1’600
— — lot 266 # Maison Louis Latour, Corton Grancey 1969	6 Bottles	chf	800 — 1’600
— — lot 267 # Maison Louis Latour, Corton Grancey 1969	6 Bottles	chf	800 — 1’600
— — lot 268 # Maison Louis Latour, Corton Grancey 1969	6 Bottles	chf	800 — 1’600
— — lot 269 # Maison Louis Latour, Corton Grancey 1969	6 Bottles	chf	800 — 1’600
— — lot 270 # Maison Louis Latour, Corton Grancey 1969	6 Bottles	chf	800 — 1’600
— — lot 271 # Maison Louis Latour, Corton Grancey 1969	6 Bottles	chf	800 — 1’600
— — lot 272 # Maison Louis Latour, Corton Grancey 1969	6 Bottles	chf	800 — 1’600
— — lot 273 # Maison Louis Latour, Corton Grancey 1969	6 Bottles	chf	800 — 1’600
— — lot 274 # Maison Louis Latour, Corton Grancey 1969	6 Bottles	chf	800 — 1’600
— — lot 275 # Maison Louis Latour, Corton Grancey 1969	6 Bottles	chf	700 — 1’400
— — lot 276 # Maison Louis Latour, Corton Grancey 1969	6 Bottles	chf	700 — 1’400
— — lot 277 # Maison Louis Latour, Corton Grancey 1969	6 Bottles	chf	650 — 1’300

1970’s & 1980’s

— — lot 278 # Maison Louis Latour, Corton Grancey 1971	6 Bottles	chf	700 — 1’400
— — lot 279 # Maison Louis Latour, Corton Grancey 1971	6 Bottles	chf	700 — 1’400
— — lot 280 # Maison Louis Latour, Corton Grancey 1971	6 Bottles	chf	700 — 1’400
— — lot 281 # Maison Louis Latour, Corton Grancey 1971	6 Bottles	chf	700 — 1’400
— — lot 282 # Maison Louis Latour, Corton Grancey 1971	6 Bottles	chf	700 — 1’400
— — lot 283 # Maison Louis Latour, Corton Grancey 1971	6 Bottles	chf	650 — 1’300
— — lot 284 # Château Mouton Rothschild 1982	2 Magnums	chf	2’200 — 4’400
— — lot 285 # Château Mouton Rothschild 1982	2 Magnums	chf	2’200 — 4’400
— — lot 286 # Château Margaux 1982	2 Magnums	chf	1’900 — 3’800
— — lot 287 # Château Gruaud-Larose 1982	2 Magnums	chf	950 — 1’900
— — lot 288 # Château Gruaud-Larose 1982	2 Magnums	chf	950 — 1’900

portfolio

“Wine is a poem in a glass.”

Robert Louis Stevenson



Grande Fine Champagne
Réserve Arbellot
Année 1906
40°

Grande Fine Champagne
Réserve Arbellot
Année 1914
40°

Grande Fine Champagne
Réserve Arbellot
Année 1875
40°

Grande Fine Champagne
Réserve Arbellot
Année 1875
40°

Grande Fine Champagne
Réserve Arbellot
Année 1869
40°













guide for bidders

online live bidding

Place your bids in real time through our online live bidding platform. Please register ahead of the date and connect to www.bagherawines.com on the day of the sale and follow the guide. *B/Live*, Baghera/wines' live auction platform, will relay your bids and give you the opportunity to live the sale as if you were attending it in person. Feel the atmosphere in the room, follow the auction's excitement and place your bids at your convenience – your bids will be instantly relayed to the auctioneer.

B/Live is accessible from computers and mobile devices, all you need is to ensure that your connection is sufficient to support live video streaming. If not, you will still be able to bid live (without the video) as the current bid and next increment will be visible on the screen.

You will need to register at least 48h prior to the sale on www.bagherawines.com to ensure registration is complete before the sale, and confirmed. You will be able to enter the sale and place your bids at your convenience. Please note that credit controls apply on these bids.

absentee bids

Leave your absentee bids ahead of the sale on our website and online-catalogue. Connect to www.bagherawines.com. You will need to register at least 48h prior to the sale on www.bagherawines.com to ensure registration is complete and your absentee bids are confirmed.

You may also give Baghera/wines instructions to bid on your behalf by writing to office@bagherawines.com. Our staff members will then try to purchase the lot(s) of your choice for the lower price possible. Please note this service is free, totally confidential and offered as a convenience to clients. Although our representative will make every effort, Baghera/wines will not be responsible for error or failure to execute bids.

collection

Lots will be made available for collection or shipping from April 22nd, 2025.

buyer's premium

The maximum bid price that you provide during your bidding process is the hammer price only. If you are successful on a lot, a **buyer's premium of 22%** will be added to the hammer price for each lot you buy. The successful bidder is responsible for any VAT that may arise on the hammer price and the buyer's premium. VAT charges and refunds depend on the particular circumstances of the buyer. It is the buyer's responsibility to ascertain and pay all taxes due. VAT is payable on the buyer's premium and, for some lots, VAT is payable on the hammer price. In all circumstances Swiss law takes precedence.

successful bids

Successful bidders will be notified and invoiced within a few days after the sale.

information

Please contact Baghera/wines at:

+ 41 22 910 46 30 | office@bagherawines.com

bidding increments

Bidding generally opens with the low estimate and advances in increments of up to 10% subject to the auctioneer's discretion. The auctioneer retains the right to call bids at his own discretion but the following will give buyers an indication of the normal bid steps:

CHF 100~500	in 20's
CHF 500~1'000	in 50's
CHF 1'000~2'000	in 100's
CHF 2'000~3'000	in 200's
CHF 3'000~5'000	200, 500, 800
CHF 5'000~10'000	in 500's
CHF 10'000~20'000	in 1'000's
CHF 20'000~30'000	in 2'000's
CHF 30'000~50'000	2'000, 5'000, 8'000
CHF 50'000~100'000	in 5'000's
CHF 100'000 +	Auctioneer's discretion

credits

editors

Michael Ganne & Camille Balboux

art direction & illustrations

Olivia Bouët-Willaumez

layout

Vanessa Paris

photography

Florian Luthi

catalogue production team

Stellio Caillat, Marnick Lucas

Manufacture d'Histoires Deux-Ponts (38320 Bresson)

Printed in March 2025 on Refit Wool Black 250g (Favini) and Blocker 100g (Gmund), both recycled papers.

all rights reserved ~ 2025

© Baghera Wines Auction & Trading SA

rue adhémar-fabri, 2 – 1201 geneva, switzerland

phone: + 41 22 910 46 30

email: office@bagherawines.com

www.bagherawines.com



instagram/bagherawines



facebook/bagherawines



linkedin/baghera-wines-auction-&-trading-sa

